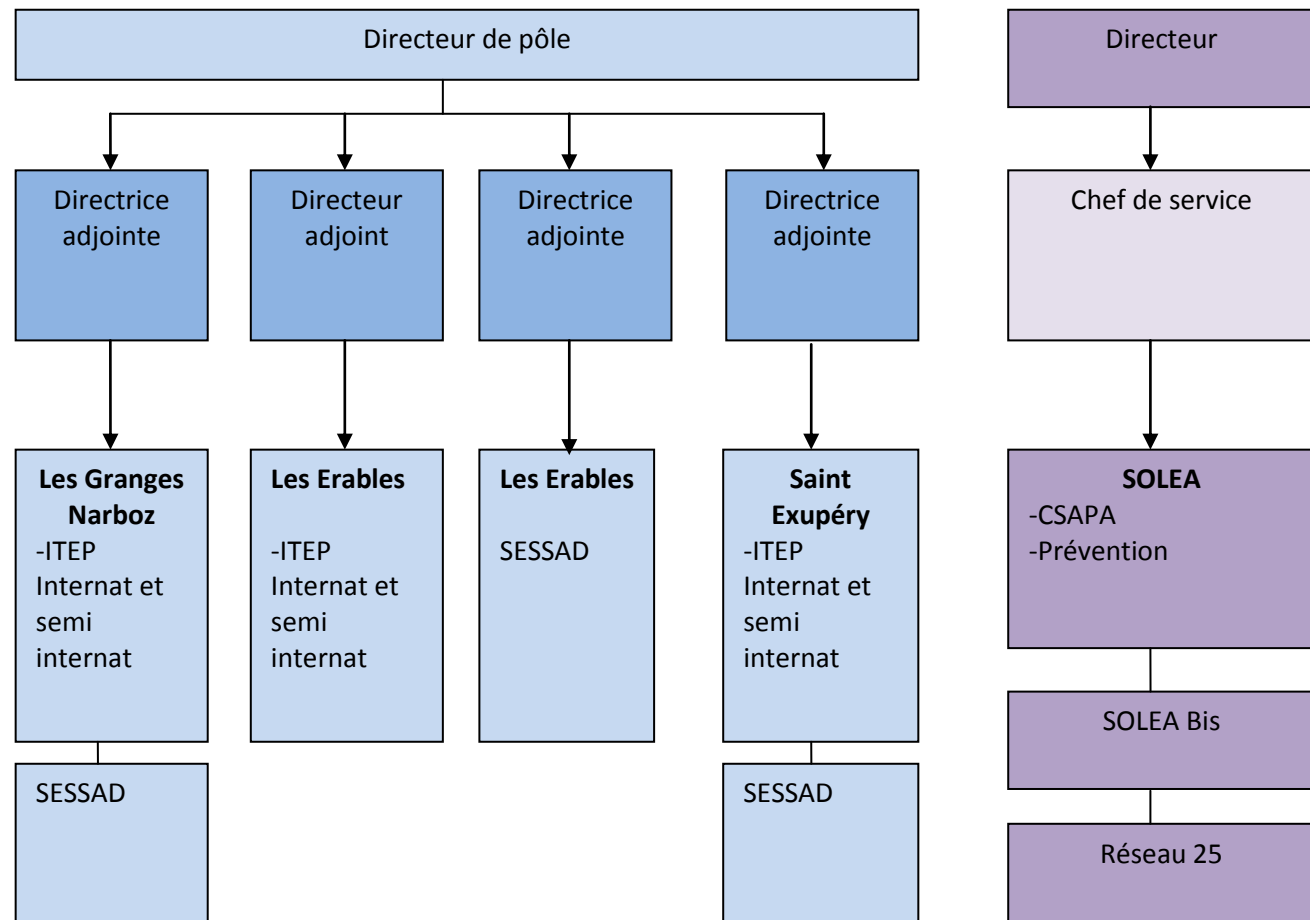


ETP : 7.86
BUDGET 2010 : 635 007.00 €

Secteur médico-social

Pôle ITEP/SESSAD

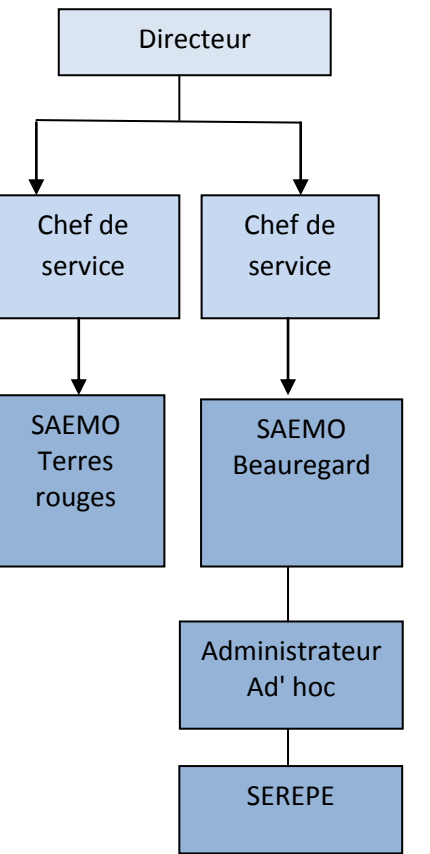
SOLEA



ETP : 10.85
BUDGET 2010 : 800 842.00 €

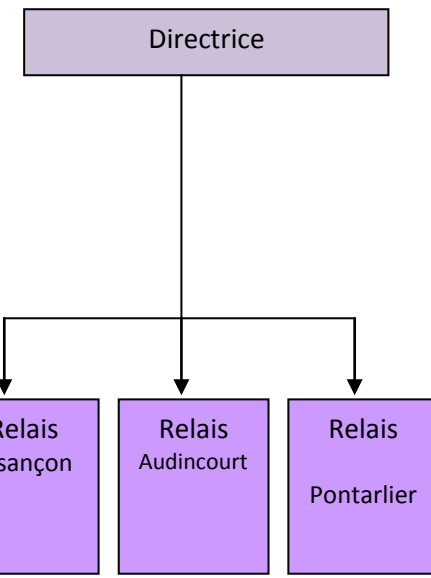
Secteur Protection de l'enfance

Services de milieu ouvert



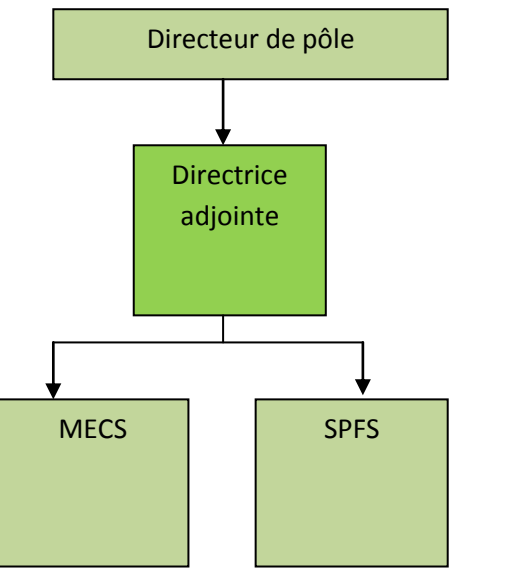
ETP : 28.28
 BUDGET 2010 : 1 604 440.00 €
 AEMO : 510 mesures
 SEREPE : 146 mesures
 AD'HOC : 160 suivis

Le relais parental



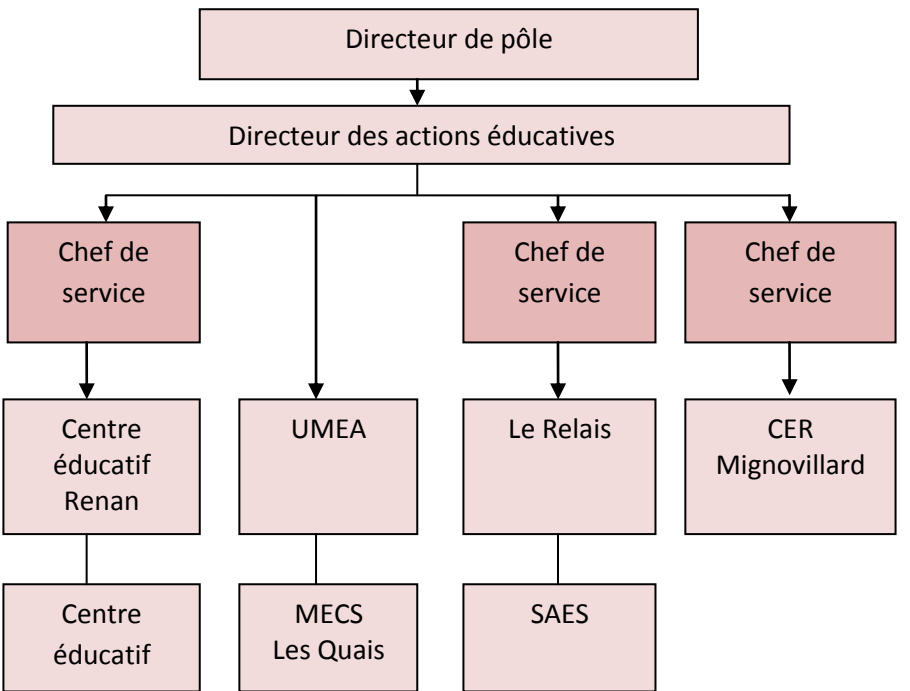
ETP : 20.81
 BUDGET 2010 : 1 954 599.49 €
 PLACES : 29

Pôle enfance Haute Saône



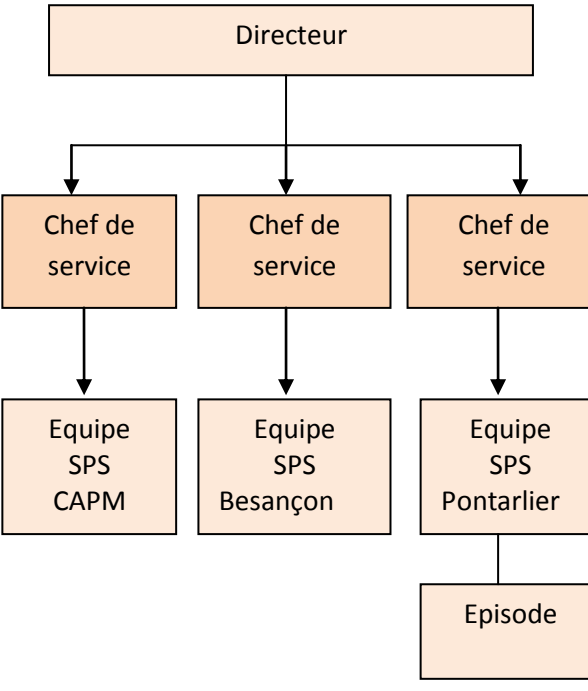
ETP : 46.65
 BUDGET 2010 : 2 104 511 €
 PLACES : 20 SPF
 24 INTERNAT

Pôle Enfance/hébergement



ETP : 68
 BUDGET 2010 : 3 584 542.95 €
 PLACES : 61.616

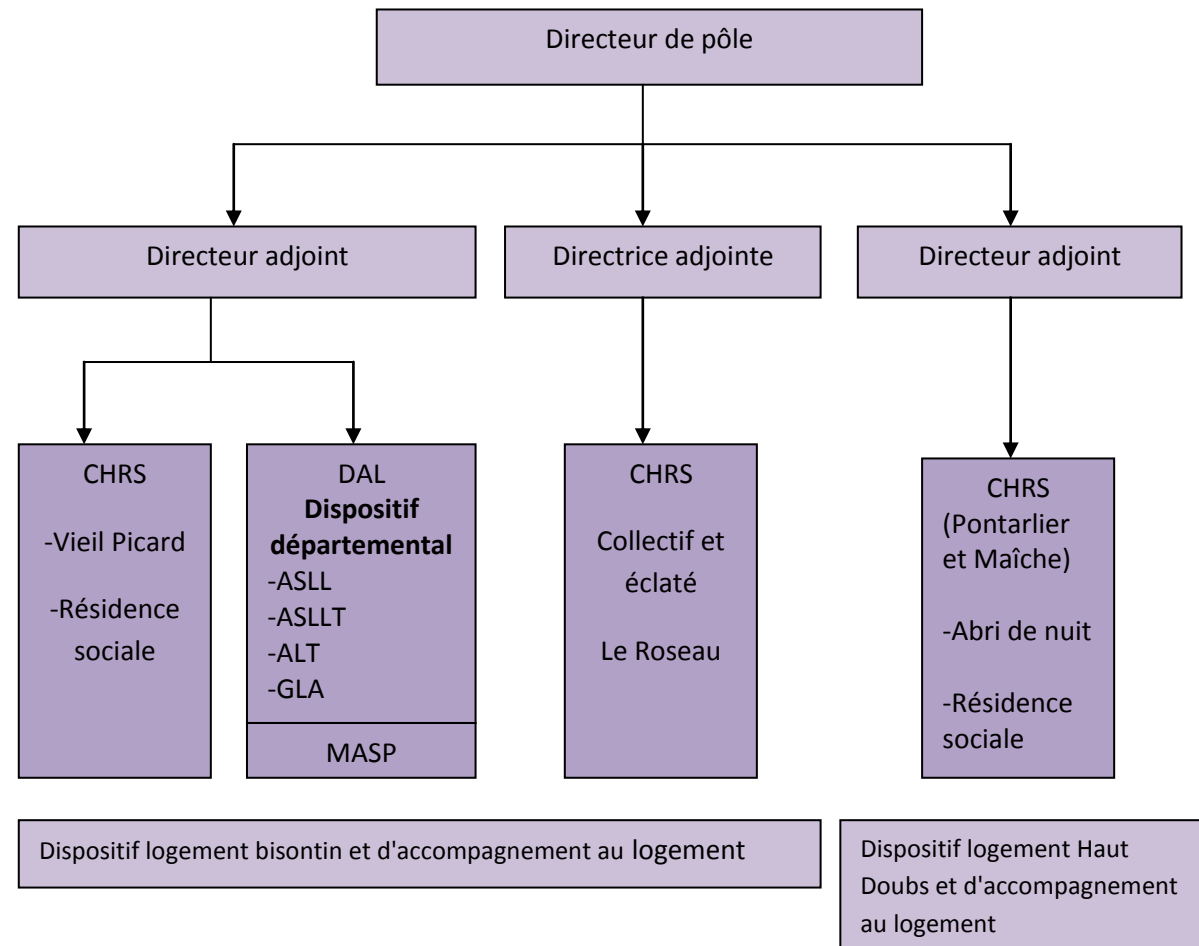
Prévention spécialisée



ETP : 47.23
 BUDGET 2010 : 2 587 269.00 €

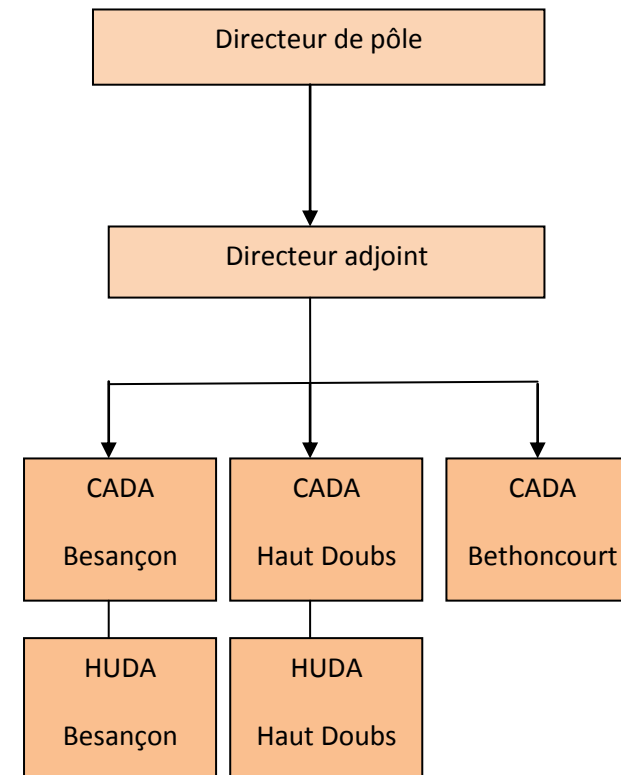
Secteur personnes en difficultés sociales

Pôle hébergement/logement



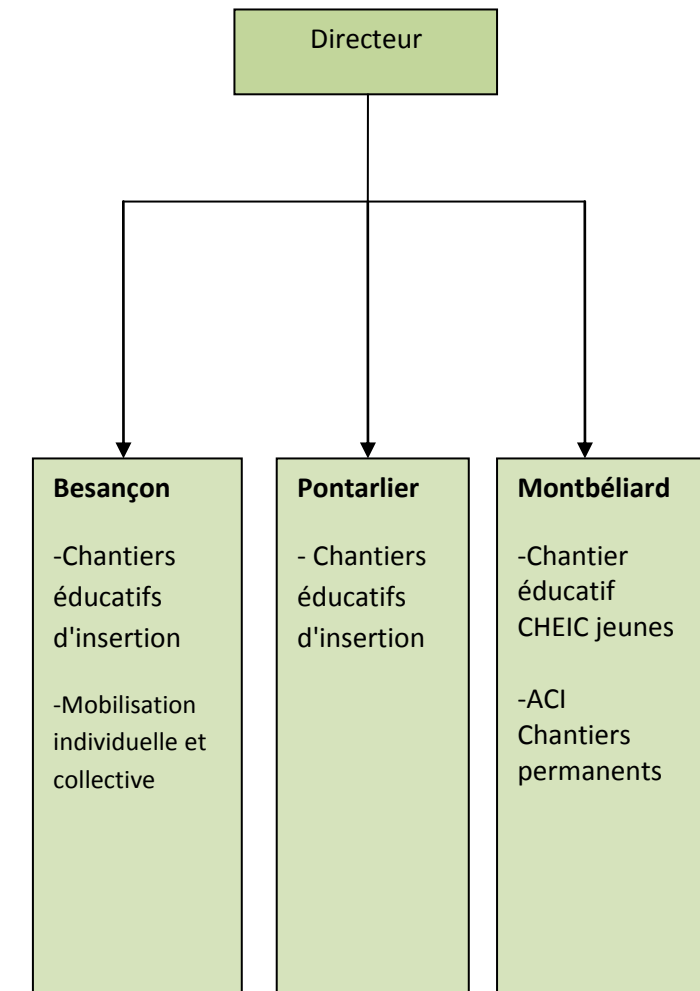
ETP : 40.52
BUDGET 2010 : 2 693 295.00 €
PLACES : 631

Pôle CADA

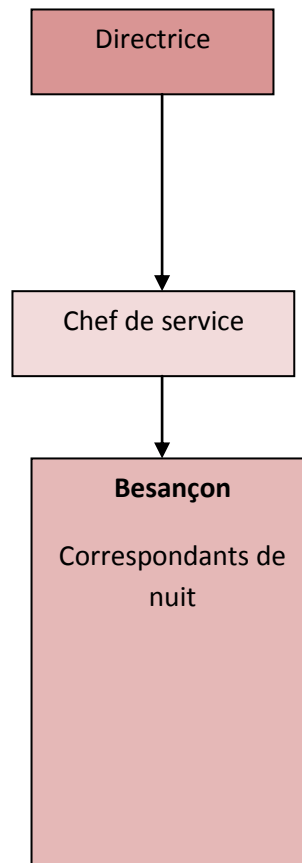


ETP : 20.30
BUDGET 2010 : 1 912 007.00 €
PLACES : 210

Service insertion atelier Maryse Bastié



Service des correspondants de nuit



ETP : 21.71
BUDGET 2010 : 1 020 000